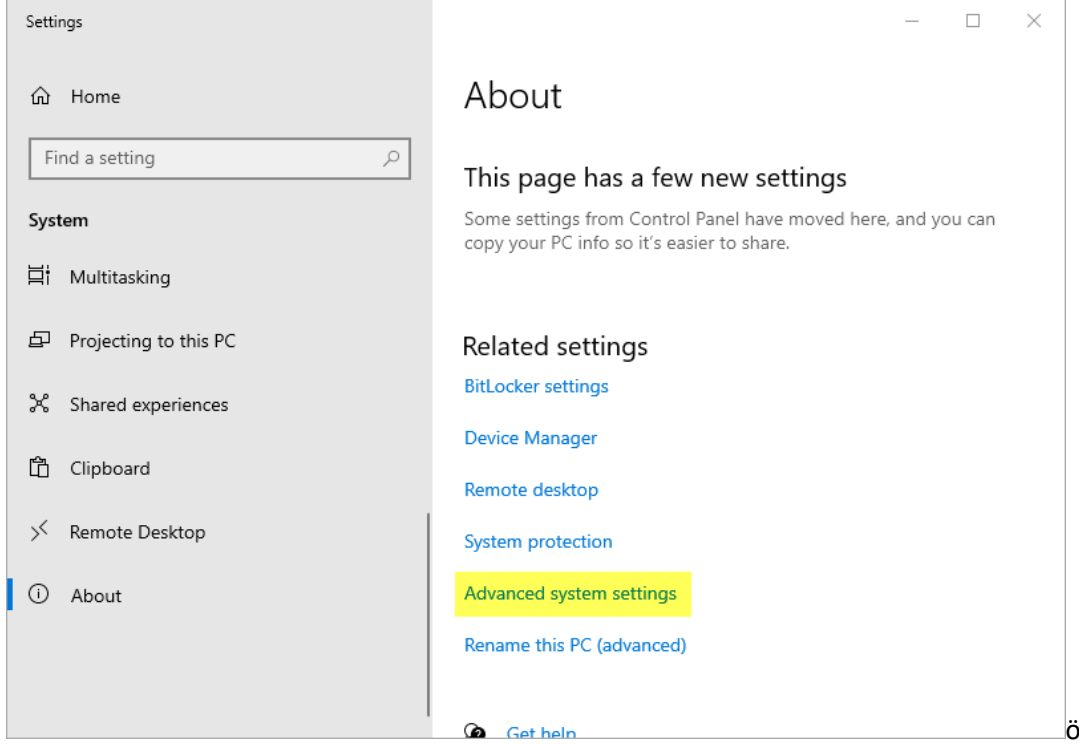
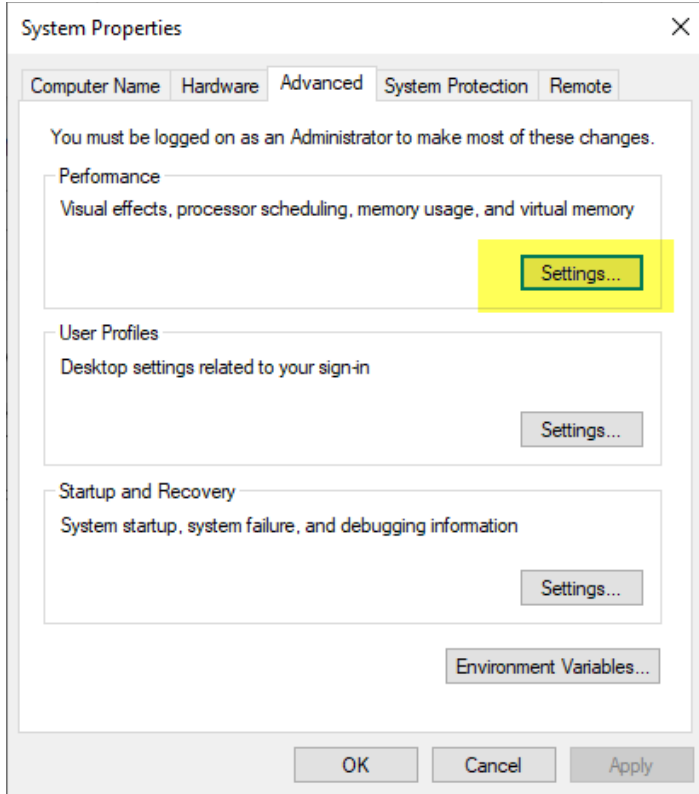


Thinfinity v3.0 ile ekstra performans iyileştirme adımları

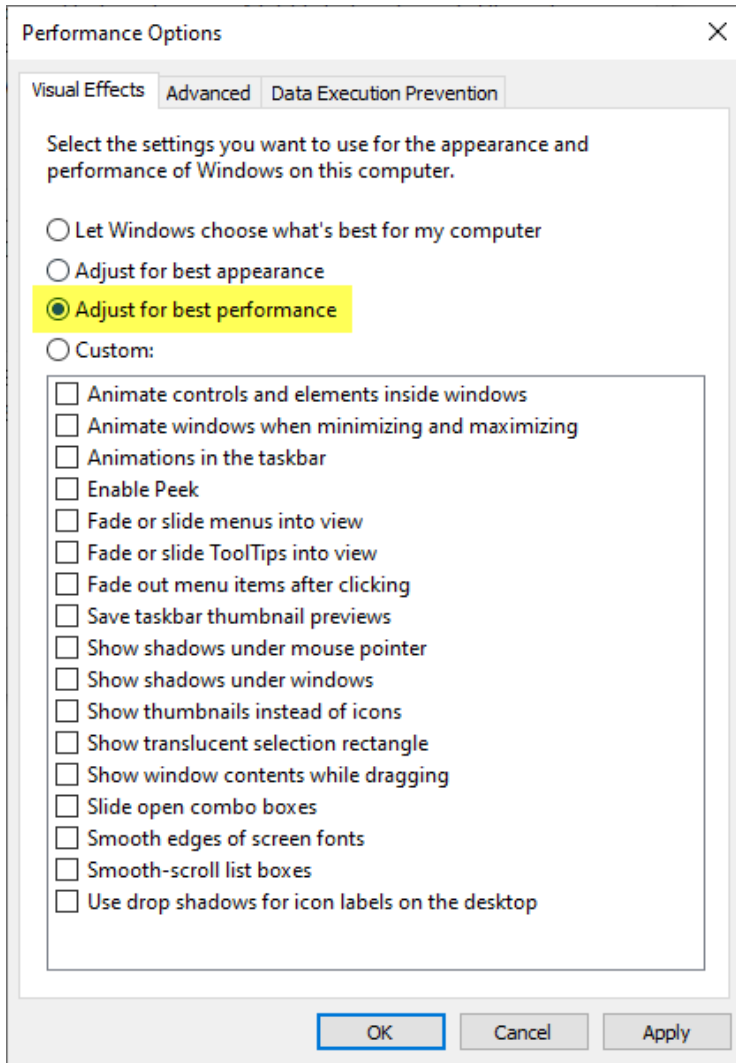
Advance System Settings ekranı açılır.



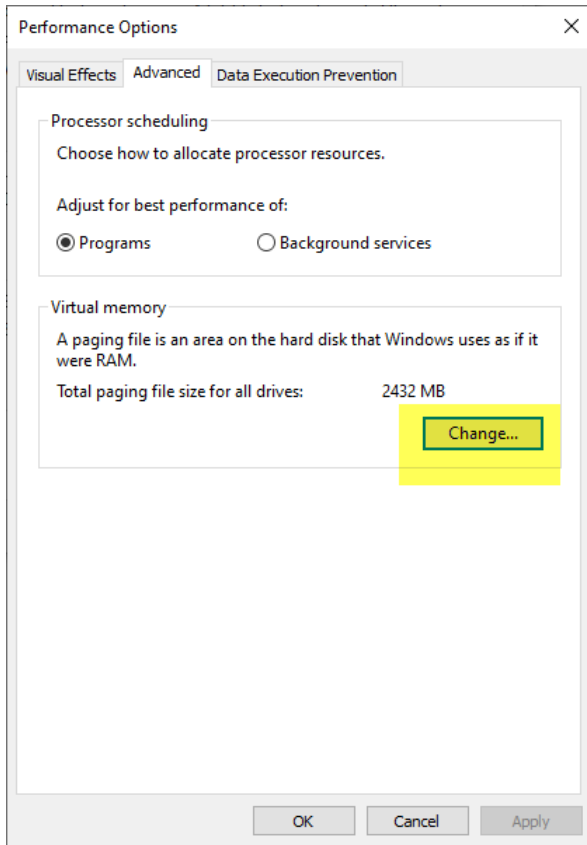
Performance kısmında settings butonuna tıklanır.



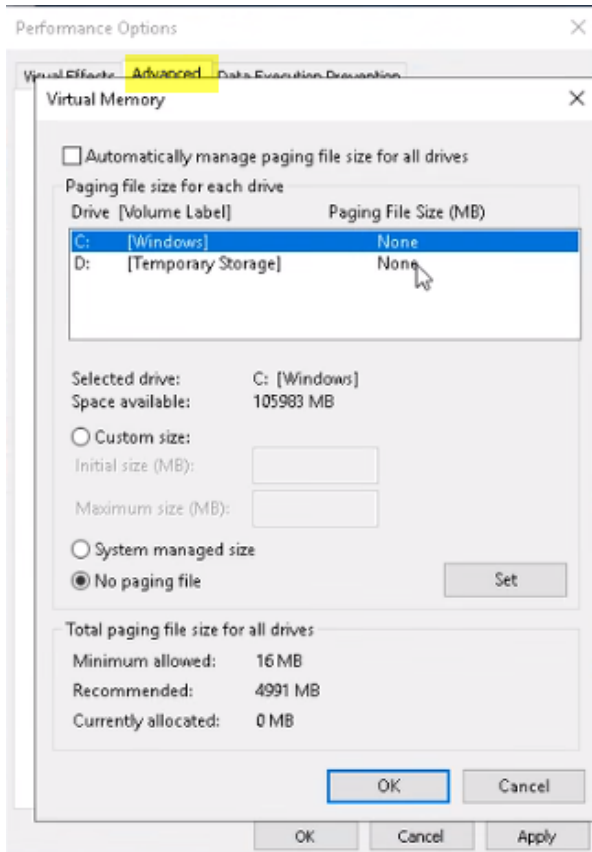
1-) Visual Effects sekmesinde "Adjust for best performance" radio button tıklanır.



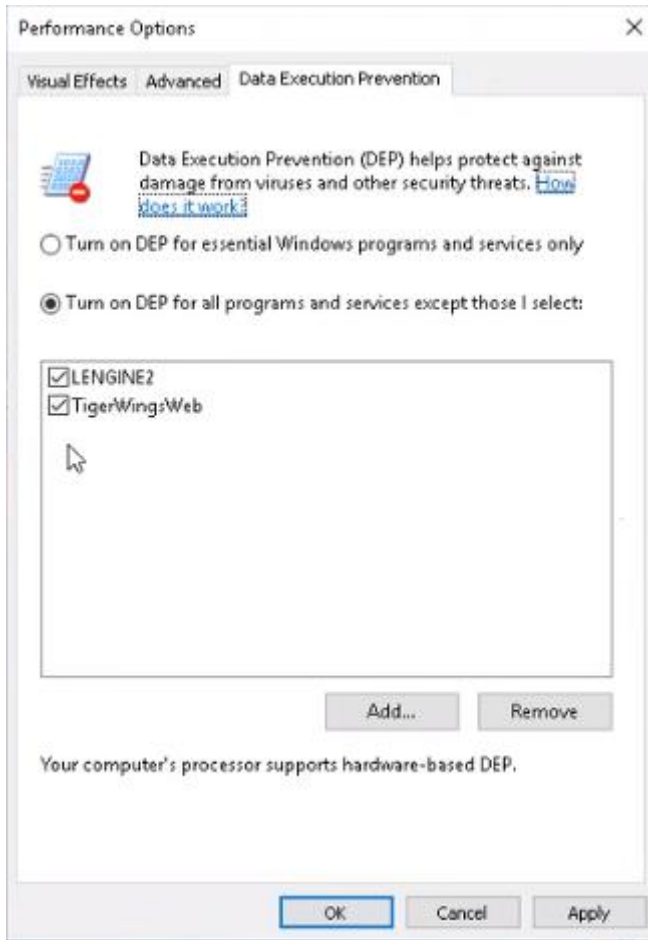
2-) Advanced sekmesinde change butonuna tıklanır.



Virtual memory ekranında no paging file olarak set edilir.

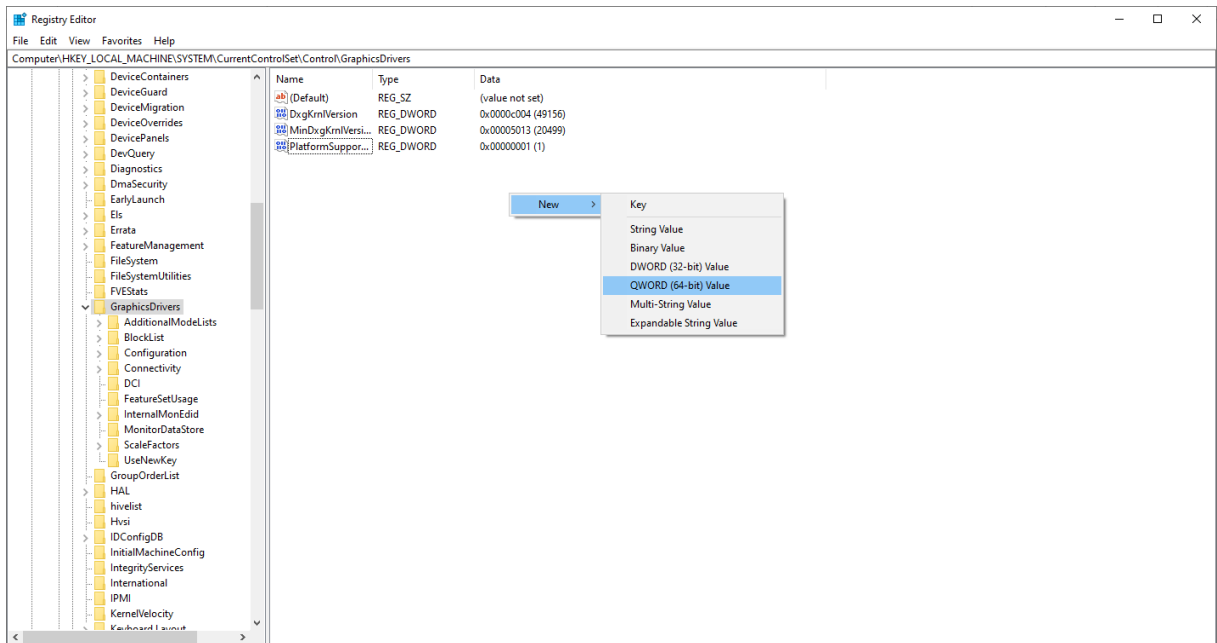


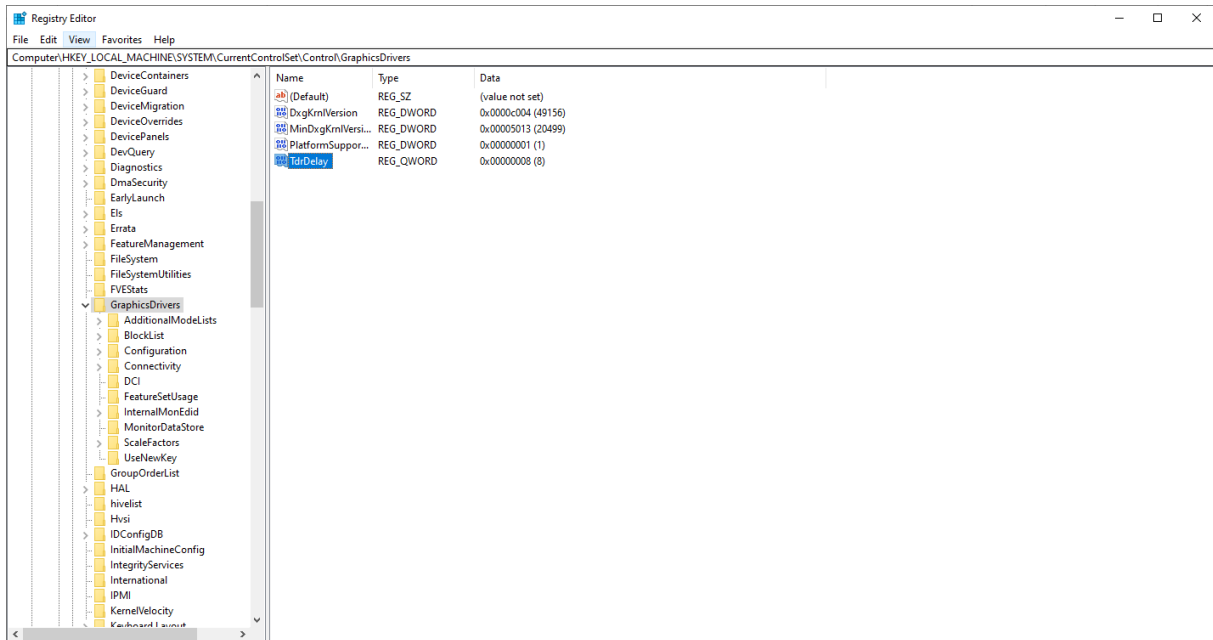
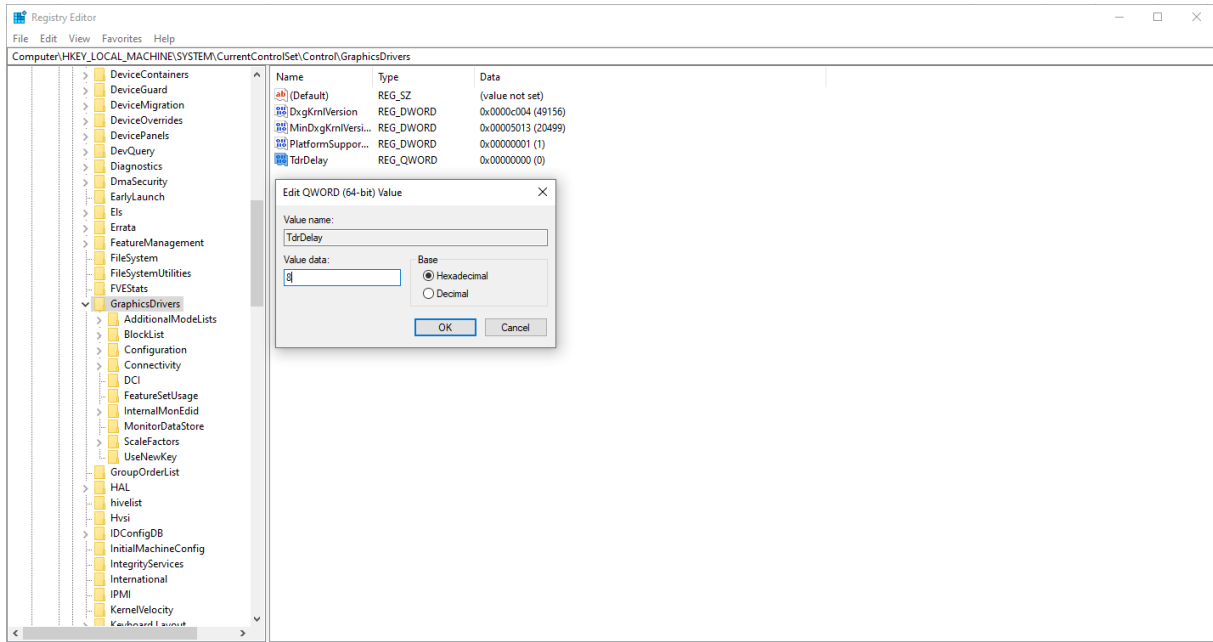
3-) Data Execution Prevention sekmesine wingsweb.exe add kısmından eklenir.



4-) Regedit ekranında

“Computer\HKEY_LOCAL_MACHINE\SYSTEM\CurrentControlSet\Control\GraphicsDrivers” yoluna gidilerek new-QWORD (64 Bit) Value seçeneği ile 8 değeri verilerek kayıt eklenir.





5-)Wings yönetim paneli üzerinde sessions sekmesinde mode kısmında “one browser per windows session” seçeneği seçilir.

The screenshot shows the 'Sessions' tab in the Logo GO Wings Server management interface. The window title is 'Logo GO Wings Server'. The menu bar includes 'File' and 'Help'. The navigation tabs are 'General', 'Broker', 'Sessions', 'Authentication', 'Applications', 'Folders', 'Protection', 'Services', and 'License'. The main content area contains the following text:

Logo GO Wings requires at least one interactive Windows session. By default it uses the console session, sharing this session among all connected users.

You can configure Logo GO Wings to run under an alternate Windows session or, if you installed the Gateway, you can chose to balance memory usage/performance by configuring one session per user or distribute users evenly among a number of Windows sessions.

Mode:

Allow running third-party applications

Use the current interactive session or console

Use these credentials:

Username:

Password:

Use VirtualUI's logged-in credentials

At the bottom of the window, there are three buttons: 'Show Log', 'Apply', and 'Close'.